

Only for Sale to, Use, and Storage by Servicepersons.



## PT® 1200 Resmethrin Aerosol Generator

Apply directly to foliage or flowers.

Kills on Contact Adult Whiteflies. Kills on Contact Fungus Gnats on the following:  
Greenhouse ornamental foliage and flowering plants: Roses, Chrysanthemums, Snapdragon, African Violets, Philodendron, Coleus, Begonia, Crassula, Carnation, Lilies, Fern, Poinsettias, Geraniums, Dahlias, Fuchsia, Hibiscus, Petunias, Cactus, Amaranthus, and Peperomia.

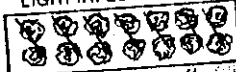
### PRE-APPLICATION DIRECTIONS

For best results apply during early evening when foliage is dry; temperature between 60°-85° F. Shut off all exhaust fans and close all windows, ventilators, and doors. If greenhouse cannot be closed tightly, use higher spray dosage. Keep greenhouse closed 2-4 hours, preferably over night following treatment. All human occupants and pets must be removed from the greenhouse before treatment is started. Occupants should not re-enter the building until it has been ventilated.

### APPLICATION DIRECTIONS

Dosage: Apply 5-10 seconds per 100 sq. ft.

#### LIGHT INFESTED AREAS



Spray direction path 8 seconds per 100 sq. ft.

Dosage based on 2 ft. high plants. Lower or higher dosage should be given based on height of foliage. Hold spray gun lower than foliage and angle spray upward so that the spray particles are driven under the plant leaves. Move gun in a fast sweeping motion to provide maximum coverage maintaining a distance of 18 to 24 inches away from foliage.

Repeat application weekly for four weeks or longer if needed.

Refer to Supplemental Label for Total Release Application Of This Product For Adult Whitefly Control.

**DISPOSAL:** Do not reuse empty container. Wrap container and put in trash collection.

### PRECAUTIONARY STATEMENTS • WARNING

**Hazards to Humans and Domestic Animals:** Avoid inhalation of spray mist. Avoid contact with skin, eyes, or clothing. In case of contact, immediately flush eyes or skin with plenty of water. Get medical attention if irritation persists. Do not contaminate water, food or food stuffs. Remove all pets. Cover fish tanks or remove.

**Notice to Operator:** Wear a pesticide respirator jointly approved by the Mining Enforcement and Safety Administration (formerly the U. S. Bureau of Mines) and by the National Institute for Occupational Safety and Health under the provisions of 30 CFR Part II.

**Environmental Hazards:** This product is toxic to fish. Keep out of lakes, streams, or ponds. Do not contaminate water by cleaning of equipment or disposal of wastes. Apply this product only as specified on this label.

**Physical or Chemical Hazards:** Contents under pressure. Do not use or store near heat or open flame. Do not puncture or incinerate container. Exposure to temperatures above 130°F. may cause bursting.

**Special Notice:** Good greenhouse management must override the use of PT 1200 when any conditions might be created by tightly closing greenhouses that would harm plant foliage or flowers. Example—creation of high temperature or humidity conditions. Do not use PT 1200 in greenhouses with unvented or defective gas heating systems or where open combustion exists.

#### HEAVY INFESTED AREAS



Spray direction, Sweep the Path 15 seconds per 100 sq. ft.

## PT® 1200 Resmethrin

### Aerosol Generator for Greenhouse Adult Whitefly Control

ALSO KILLS:

Fungus Gnats, Exposed Flower Thrips on Chrysanthemums, and Cucumber Beetles on Chrysanthemums, Dahlias, and Petunias

#### ACTIVE INGREDIENTS:

Resmethrin-[5-(phenylmethyl)-3-furanyl]  
methyl 2,2-dimethyl-3-(2-methyl-1-propenyl)  
cyclopropanecarboxylate.

1.000%  
0.067%  
98.933%

#### INERT INGREDIENTS:

E.P.A. REG. NO. 499-180-7A  
E.P.A. EST. NO. 499-MO-1

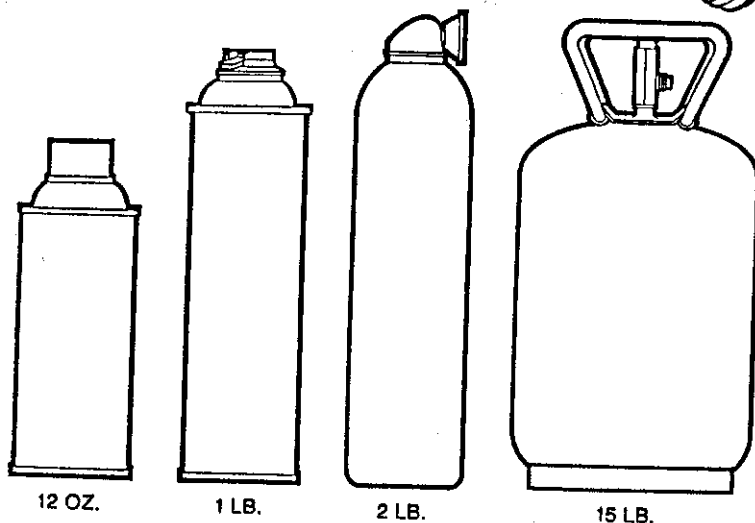
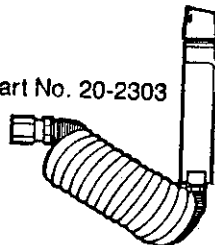
**WARNING:** Keep out of reach of children.  
See side panel for additional warnings.

NET WEIGHT: 1 LB.

Whitmore Research Laboratories, St. Louis, Missouri 63122

Comes in four sizes:

Part No. 20-2303



CALL: